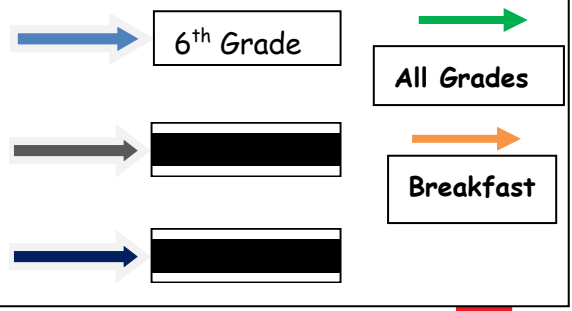


# Marine Creek Middle School AM-Arrival-First Floor 2020-2021



Car riders/walkers

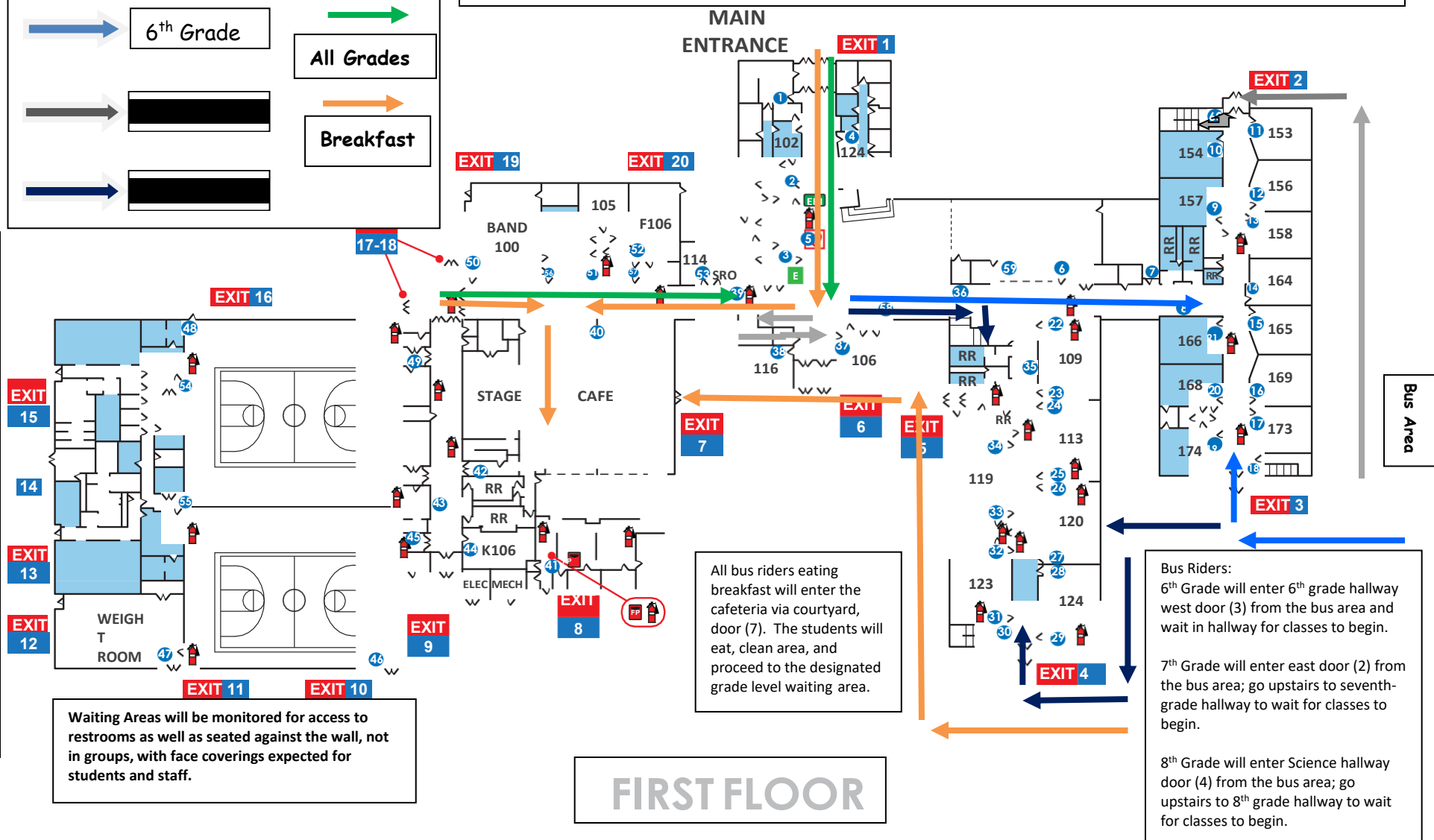
- will enter through north entrance (doors 17/18) or front entrance (door 1)

Students will proceed to their grade level designated wait area.

- 6<sup>th</sup> grade will proceed to hallway via main hallway area to wait for classes to begin
- 7<sup>th</sup> grade will use stairs by cafeteria and proceed to hallway area to wait for classes to begin
- 8<sup>th</sup> grade will use stairs by library and proceed to hallway area to wait for classes to begin

All Car riders/walkers eating breakfast will enter cafeteria via main hallway. The students will eat, clean area, and proceed to the designated grade level waiting area.

7<sup>th</sup> grade Athletics and 1<sup>st</sup> period Tennis will enter through locker room doors (13-boys) (15-girls) for practice per expectations.



Waiting Areas will be monitored for access to restrooms as well as seated against the wall, not in groups, with face coverings expected for students and staff.

All bus riders eating breakfast will enter the cafeteria via courtyard, door (7). The students will eat, clean area, and proceed to the designated grade level waiting area.

**Bus Riders:**

6<sup>th</sup> Grade will enter 6<sup>th</sup> grade hallway west door (3) from the bus area and wait in hallway for classes to begin.

7<sup>th</sup> Grade will enter east door (2) from the bus area; go upstairs to seventh-grade hallway to wait for classes to begin.

8<sup>th</sup> Grade will enter Science hallway door (4) from the bus area; go upstairs to 8<sup>th</sup> grade hallway to wait for classes to begin.